

MM10/16/25

Designed in conformity to the highest accuracy and reliability standards, the **MM** mechanical meter range by Pietro Fiorentini is characterised by the zinc-coated steel plate external case. Its high accuracy is determined by the metering module, which is submitted to several and strict quality control procedures during the whole production process. Pietro Fiorentini commercial gas meters can be used with natural gas as well as manufactured gas, LPG or other non-corrosive and preliminarily filtered gases. The meters are designed to operate in low pressure gas operations.



Medium / small
industry



Commercial users

Features	Values	
Maximum capacity	G10	16 m ³ /h 565 cfh
	G16	25 m ³ /h 882 cfh
	G25	40 m ³ /h 1412 cfh
Minimum flow rate	G10	0.1 m ³ /h 3.5 cfh
	G16	0.16 m ³ /h 5.7 cfh
	G25	0.25 m ³ /h 8.8 cfh
Connections	G10 [250mm]	1" 1/4 ISO 228 DN 32 NFE 29-532
	G10 G16 [280mm]	2" ISO 228 DN 50 NFE 29-532
	G16 FL [280mm]	DN50 PN10 (sliding)
	G25 [335mm]	2" 1/2 ISO 228
Resistance to high temperatures "T"	approved for high temperatures (up to 10 kPa 100 mbar)	
Maximum working pressure	50 kPa 500 mbar	
Operative temperature range	from -25 °C to +55 °C from -13 °F to +131 °F	
Gas temperature range	from -25 °C to +55 °C from -13 °F to +131 °F	
Pressure drop at maximum capacity	up to G10 ≤ 0.2 kPa 2 mbar for G16 and G25 ≤ 0.3 kPa 3 mbar	

Table 1 Features

Part	Material
Body	galvanised, deep-drawn and powder-coated steel sheet
Diaphragm	synthetic

REMARK: The materials indicated above refer to the standard models. Different materials can be provided according to specific needs.

Table 2 Materials

MM commercial gas meters are designed to meet OIML R137 and EN 1359. The product is certified according to European Directives 2014/32/EU (MID).



OIML R137



EN 1359



MID

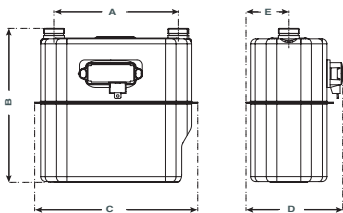
MM compatibility with Green Gas



Biomethane compatible and 20% Hydrogen blending compatible. Higher blending available on request.

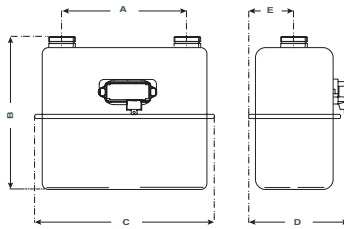
Weight & Dimensions

G10



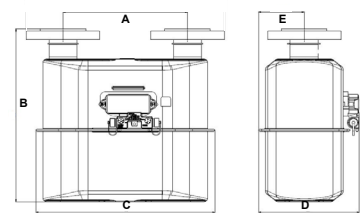
Dim	[mm]	inches
A	250	9.8"
B	310	12.2"
C	328	12.9"
D	195	7.7"
E	86	3.4"
Weight	Kg	lbs
	5.15	11.4

G16



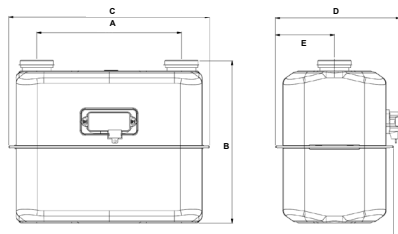
Dim	[mm]	inches
A	280	11.0"
B	340	13.4"
C	402	15.8"
D	226.7	8.9"
E	103	4.1"
Weight	Kg	lbs
	6.4	14.1

G16 FL



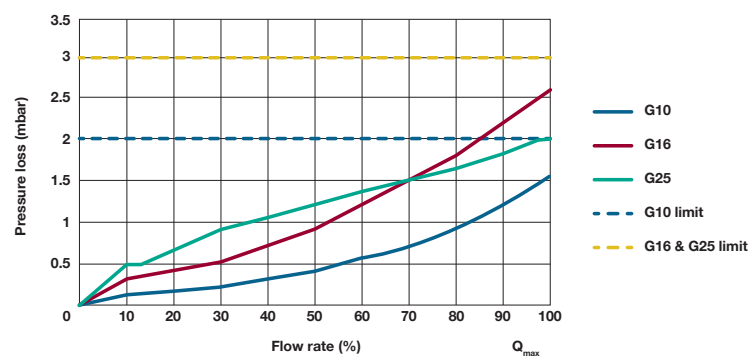
Dim	[mm]	inches
A	280	11.0"
B	388	15.3"
C	402	15.8"
D	227	8.9"
E	103	4.1"
Weight	Kg	lbs
	10	22

G25



Dim	[mm]	inches
A	335	13.2"
B	375	14.8"
C	465	18.3"
D	288.9	11.4"
E	136.5	5.4"
Weight	Kg	lbs
	10.8	23.8

Pressure loss curve



On request it is possible to provide the meter with 2 thermowell and 1 pressure tapping